

BIZINSIGHT FOR INTACCT 1.0.2

Release Notes

BizInsight for Intacct
Build 1.0.2
7/1/2015

Table of Contents

Bizinsight for Intacct 1.0.2	1
Release Notes	1
1. New Features	4
1.1. Improved Profile Support.....	4
1.2. New Functions	4
1.3. Flexera Activation	5
2. Enhancements.....	6
2.1. Color Scheme Change	6
2.2. Select Data Screen	6
2.3. View Data	7
2.4. Refreshable Lists	7
2.5. Content Split into General Ledger and System Connectors.....	7
2.6. Excel Ribbon Update	7
3. Bug Fixes	8
3.1. Data Sync.....	8
3.2. Lists	8
3.3. SuperFunctions	8
3.4. Check for Errors	8
4. Known Issues.....	8
4.1. Refreshable Pivot Tables.....	8
4.2. Selecting Data - Headers.....	8
4.3. Selecting Data – selecting a List generated by BizInsight Desktop Edition.....	8
4.4. A note on Lists.....	9
4.5. Menu sizes in certain environments.....	9
4.6. Native Excel functions and SuperFunctions in the same cell.....	9
4.7. Parameters that reference a cell	9
4.8. Actions that require data to be reselected	9
4.9. Use of formula modifiers in cells containing a SuperFunction	9
4.10. Use of data that contains blank cells	9
4.11. Lotus syntax	9
4.13. SuperFunctions from Intacct.....	10
4.14. GL Entry Detail - @StartDate and @EndDate	10
4.15. Problems with generating a list of available values.....	10
4.16. Passing parameter values that return no data will return an error.....	11

- 4.17. Available Values populate only for the “Default” profile. 11
- 4.18. Issues with CSVs and Count Distinct 11
- 5. BizInsight Desktop Edition – Best Practices 11
 - 5.1. Using selected Excel Data 11
 - 5.2. Use of Named Ranges or cell ranges vs. Tables when selecting data..... 11
 - 6.3. Working with Dates, Times, and DateTimes 12

1. New Features

1.1. Improved Profile Support

The BizCloud Accelerator service has been modified to include the Company ID with the user’s profile credentials. This allows the user to set up multiple profiles to report off of multiple Company ID’s with unique credentials for each. A “Profile” function argument field has been included in each pre-built GL function to allow the user to return an aggregation for specific profiles. Additionally, an **@Profile** filter has been included in BizInsight Desktop Edition’s Query Editor to allow the user to pick the specific profile they would like to return data for. When using the **@Profile** filter in BizInsight Desktop Edition’s Query Editor, a list of available values will populate to allow the user to pick from a list of available profiles that the user can report from.

1.2. New Functions

Functions grouped under the “By Reporting Period” node on the Nav Pane and the Budget Balance function have been rebuilt to query by reporting period. A separate set of the Net Balance, GL Credits and GL Debits functions have been included to support loose date ranges. This is because Intacct does not expose a fiscal calendar and instead encourages creation of user defined “Reporting Periods”. The custom date range functions only work for actuals because loose dates are dependent on the transaction entry date. These new functions should replace the use of MTD and YTD functions, although those are still available to support existing reports. The “Aggregate Column” parameter has been removed from ENDBAL and BEGBAL, as it is implied by the function name.

Function Map:

Nav Pane Group	Function Title	Function	Underlying Table	Drill Down Table
By Reporting Period	Net Balance	=PERBAL_INTGL()	GL Account Balances	GL Entry Detail
By Reporting Period	Period Debits	=PER_DB_INTGL()	GL Account Balances	GL Entry Detail
By Reporting Period	Period Credits	=PER_CR_INTGL()	GL Account Balances	GL Entry Detail
By Reporting Period	Beginning Balance	=BEGBAL_INTGL()	GL Account Balances	N/A
By Reporting Period	Ending Balance	=ENDBAL_INTGL()	GL Account Balances	N/A
Custom Date Range	Net Balance	=GL_NET_BAL_INTGL()	GL Entry Detail	GL Entry Detail
Custom Date Range	GL Credits	=GL_CR_INTGL()	GL Entry Detail	GL Entry Detail
Custom Date Range	GL Debits	=GL_DB_INTGL()	GL Entry Detail	GL Entry Detail
Budget	Budget Balance	=BUDBAL_INTGL()	GL Budget Detail	GL Budget Detail

Required Parameters:

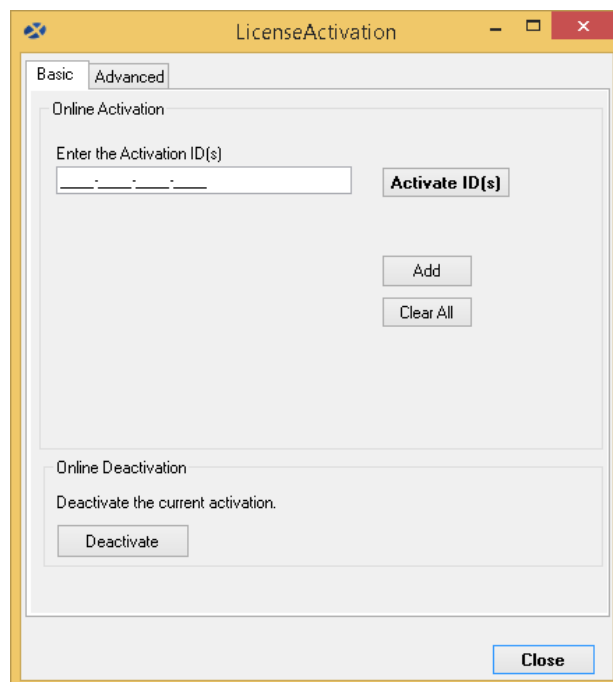
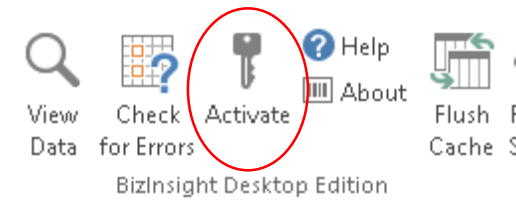
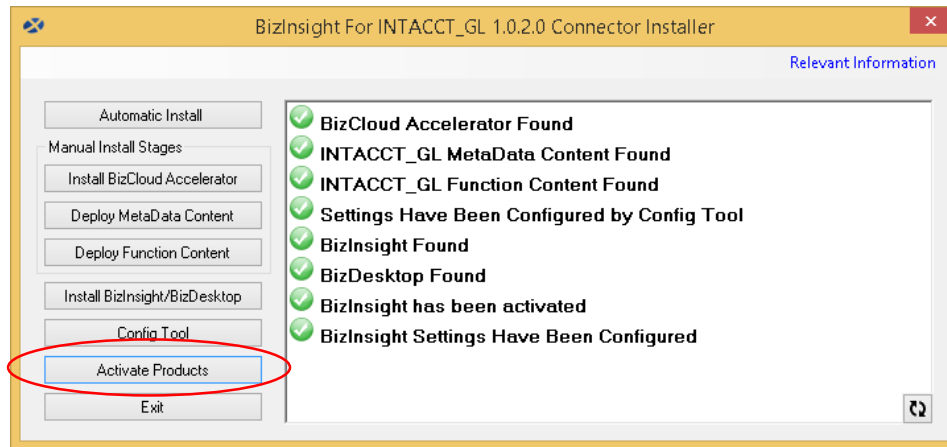
There are only 4 data sources in Intacct that have required parameters.

Data Source	Required Parameters
GL Entry Detail	@StartDate; @EndDate
GL Account Balances	@ReportingPeriod
GL Budget Detail	@BudgetID
Get Account Balances*	@StartYear; @StartMonth; @EndYear; @EndMonth; @EndDay

*Get Account Balances was included for backwards compatibility and does not appear as a list on the Navigation Pane.

1.3. Flexera Activation

Legacy licensing has been replaced with Flexera. This means that users updating to or installing from scratch the latest version of BizInsight for Intacct will need a Flexera Activation ID in order to complete the installation. A new step has been included in the installer called **Activate Products** that gives users an opportunity to enter their Flexera Activation ID during installation. Users can also run this step later if they need to add new license keys or need to re-activate. An **Activate** button can also be found on the BizInsight ribbon and allows users to manage their activations from within Excel. Restarting the service may be necessary if users are altering the activation after the initial installation.



2. Enhancements

2.1. Color Scheme Change

The Select Data and Query Data windows are now white without any blue color.

2.2. Select Data Screen

The Select Data screen has been re-designed to make the data selection process more clear. The **“Select a range of cells”** section has been moved to the top of the window and the **“Create as a List”** checkbox has been relabeled to **“Create as a Table.”** The **“Named Range”** and **“List or Table”** dropdowns have been relabeled as **“Select an existing range Name”** and **“Select an existing Table”** and moved to the bottom of the **Select Data** window.

Select Data

Where is your data?

Select a range of cells

Name your selection

Create as a Table

Or

Select an existing range Name

Select an existing Table

Back Next Cancel

2.3. View Data

The View Data window now shows information regarding the data retrieved from Intacct and stored in the BizCloud Accelerator service. This data can be found under the **Service Data** section of the Available Data Sets panel in the View Data window.

View Data ▼ ×

Available Data Sets								
Service Data								
Name	Columns	Key	Rows	CacheType	Filter	Created	CreatedFor	
DataSources	ID;ContentPac...	DataSources	75	MetaData	Data Source=...	6/24/2015 9:3...		
Drilldown	ContentPack;...	Drilldown	30	MetaData	Data Source=...	6/24/2015 9:3...		
AvailableValues	DatasourceN...	AvailableValues	400	MetaData	Data Source=...	6/24/2015 9:3...		
ColumnMasks	Mask;DataSo...	ColumnMasks	2910	MetaData	Data Source=...	6/24/2015 9:3...		
Entity[NO_DA...	LocationID;Re...	Entity[NO_DA...	9	DataCache		6/24/2015 9:4...		
Reporting Per...	Record;Recor...	Reporting Per...	233	DataCache		6/24/2015 9:4...		

Close Delete Export Data Sets to XML

2.4. Refreshable Lists

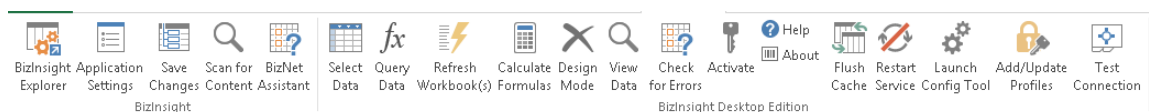
Lists generated from Intacct are now refreshable against the data cached in the BizCloud Accelerator service.

2.5. Content Split into General Ledger and System Connectors

BizInsight for Intacct has been split into two different content packs – General Ledger and System connectors. This means that two different content installers will need to be run to install both content packs.

2.6. Excel Ribbon Update

The “Intacct Control Panel” section of the BizInsight ribbon has been merged with the code for BizInsight Desktop Edition and will only show if both BizInsight Desktop Edition and BizCloud Accelerator are both installed on the machine. If BizInsight Desktop Edition is installed but BizCloud Accelerator is either not installed or the service is not started, the buttons will not appear on the ribbon. The “Extract Dimensions” and “View Cache” buttons have been removed and a new “Test Connection” button has been added to provide the user an easier way to verify if the BizCloud Accelerator service is running. Users can still pull over dimension information with the lists on BizInsight’s Navigation Pane and can view what is currently cached in the service by using BizInsight Desktop Edition’s “View Data” feature.



3. Bug Fixes

3.1. Data Sync

Enhanced stability with different data sync settings enabled (Automatic, Session Only, Startup Only, and Manual).

3.2. Lists

1. Fixed a bug relating to cell referencing parameters when creating a list where the Expression was being passed as a value instead of a cell reference to the List Parameters.
2. Fixed a bug where additional columns were being added to Analysis Sets when refreshed.
3. Enabled “preserve column layout” to honor the user’s changes to Analysis Sets in Excel.
4. Fixed a bug where changing a filter in the underlying expression of the Analysis Set didn’t actually cause the analysis set to filter correctly.
5. Fixed a few bugs dealing with IN statements.
6. Added a scroll bar in certain parts of the List Parameters box to make it easier to read when the list has a large expression or returns a large number of columns.

3.3. SuperFunctions

Using cell references with IN statements now works as expected.

3.4. Check for Errors

Fixed a bug where running an error check would not complete on larger workbooks.

4. Known Issues

4.1. Refreshable Pivot Tables

Pivot tables created with BizInsight Desktop Edition are not refreshable.

4.2. Selecting Data - Headers

Headers are required for any data that is selected.

4.3. Selecting Data – selecting a List generated by BizInsight Desktop Edition

Users must be on the same worksheet as their BizInsight List in order to select it using the Select Data button on the BizInsight Desktop Edition ribbon.

4.4. A note on Lists

Lists created (via the Query interface or from drilling down on a SuperFunction) will automatically create a named range scoped to the worksheet on which they exist. If the worksheet is deleted prior to the Named Range being deleted in the Excel Name Manager, the Named Range will continue to display in the Select Data dropdown in the Named Ranges section.

4.5. Menu sizes in certain environments

In some tablet environments, or desktop environments that have text magnifier enabled (a display setting in Control Panel), menus are not ideally sized and may have to be expanded to display all their buttons. Once a user resizes a window, size selection will be preserved the next time the product is used.

4.6. Native Excel functions and SuperFunctions in the same cell

The use of native Excel functions with SuperFunctions in the same cell is not supported.

4.7. Parameters that reference a cell

Parameter levels that reference a cell to obtain a value may not be altered to use a literal value. A new parameter level must be created, at which point a value may be selected from the dropdown menu or typed in manually.

4.8. Actions that require data to be reselected

If you edit a column header of a selected data set or wish to insert a new column of data, you will be required to re-select the data set to begin building SuperFunctions or Lists against it.

4.9. Use of formula modifiers in cells containing a SuperFunction

Cells containing a SuperFunction and a modifier such as *-1 calculate correctly but if a user opens the BizInsight Query with such a cell highlighted, the *-1 will be included when inserted into a cell, though there is no indication it is provided in the BizInsight Query that this will happen.

4.10. Use of data that contains blank cells

Blank cells are considered a null value, not a zero. This should be kept in mind when building parameters that are looking for zero values. If you have a column of numbers that have empty cells, you will want to populate these cells with zeroes before building parameter levels that are looking for zeroes.

4.11. Lotus syntax

The use of Lotus syntax in SuperFunctions is not supported.

4.13. SuperFunctions from Intacct

SuperFunctions from Intacct will always return as a String. This makes it impossible to perform calculations (=SUM(), =AVERAGE(), etc.) off of those SuperFunctions in Excel. Calculations can still be performed on SuperFunctions built against data in Excel. If a user would like to perform a calculation on a SuperFunction, it is recommended that they pull a list into Excel from the Navigation Pane, select that data using BizInsight Desktop Edition, and then build a SuperFunction from the list that was pulled from Intacct.

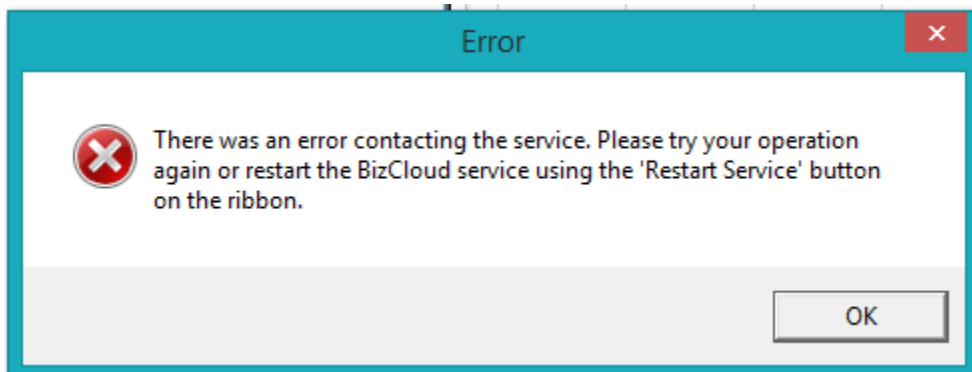
4.14. GL Entry Detail - @StartDate and @EndDate

When crafting SuperFunctions against the Intacct data source GL Entry Detail, the @StartDate and @EndDate filters exhibit a peculiar behavior. The filter performs as expected when literal values are entered, or available values are selected from the query editor. When dates are cell referenced for this filter, the cell should **NOT** be formatted as a date. Formatting this cell as text, or general, with an apostrophe (') preceding the date string is best practice. Again, this is only for SuperFunctions using cell references for the @ parameters on GL Entry Detail. The reason is, Excel converts dates to numeric values, but these parameters need to be passed as a date string to the XML. Symptoms of improperly passing dates to the XML request are:

1. SuperFunction returns a zero and drill-down creates the error "No data found for this formula."
2. Message in the BizCloud Accelerator log: "Error Processing The Request."

4.15. Problems with generating a list of available values

When dragging and dropping a List from the Navigation Pane, suggested parameter fields are automatically populated. The list of available values to populate parameter fields comes from other data sources and additional API calls. If the user has no permission, or there is no data for a given parameter, the following error will appear.



Manually created parameters can trigger this same error. Removing the parameter allows continued functionality of the product. This error does not require a restart of the service. It merely indicates insufficient data or permissions for the value represented by the filter.

4.16. Passing parameter values that return no data will return an error.

This can happen if there is no data for the query specified, or if a parameter is passed in a way that it doesn't match the underlying data. The best way to get proper values for use in reporting is by dragging and dropping lists from the Navigation Pane.

4.17. Available Values populate only for the "Default" profile.

The list of available values that populate parameter fields comes from other data sources and additional API calls using the **Default** profile. This means that a user must manually type in their parameters or use cell referencing if using a non-default profile in BizInsight Desktop Edition's Query Data tool.

4.18. Issues with CSVs and Count Distinct

SuperFunctions returning CSV or a Count Distinct do not work with data coming from Intacct.

5. Best Practices

5.1. Using selected Excel Data

The product requires that you have a unique name for your data. Utilize a unique *Range Name* or *Table Name* across all workbooks in a single Excel session.

The product works best when you do not alter the *Worksheet Name*, *Range Name*, or *Table Name* used when selecting the data (Select Data option). However, if you decide to change the *Worksheet Name*, *Range Name*, or *Table Name*, the easiest way to make sure your data is updated successfully is to add the data again using the Select Data option on the ribbon. If you decide to change the *Worksheet Name*, *Range Name*, or *Table Name* and do not re-add the data using the Select Data option, here are the exceptions to data synchronization:

- Renaming a *Table Name* or *Range Name* will cause the Cell Address to be used in place of the original name. If the renamed *Table Name* or *Range Name* is resized on refresh, the data will not be available in BizInsight.
- Renaming a *Worksheet Name* and then setting focus to another *Worksheet* *will* allow BizInsight to locate the renamed *Worksheet*. However, if you fail to set focus to another *Worksheet* after renaming the *Worksheet*, updated data will not be available in BizInsight.

Re-naming a workbook will not cause data synchronization failures.

5.2. Use of Named Ranges or cell ranges vs. Tables when selecting data

Selecting Excel tables for use (as opposed to a range of cells or a named range) is the best practice. With tables, deleting a row or column from a table that has been selected with the Select Data button will update the selection of data seen by the product. This feature is not supported with cell ranges and only partially supported with the use of named ranges (for example, adding rows or columns to the outer edge of a named range is not supported)

6.3. Working with Dates, Times, and DateTimes

When working with data that is either a Date, Time, or DateTime data type, it is important for users to format the cells containing that data accordingly. Cells containing date values should be formatted as Date, cells containing time values should be formatted as Time, and cells containing a date and a time should be formatted with a custom format that contains both date and time (i.e. "mm/dd/yyyy hh:mm:ss AM/PM").